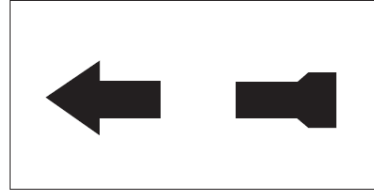


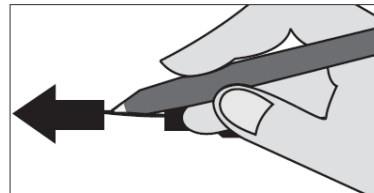
HOW TO VOTE YOUR BALLOT

It's As Easy As . . .

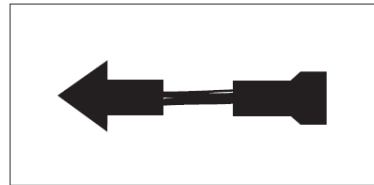
1 To the right of each candidate name is an arrow with the center portion missing.



2 Make your ballot selections by connecting the two parts of the arrow with a black or blue pen.



3 Verify that you have connected the two parts of the arrow with a solid line. Vote for only one candidate per office, unless otherwise instructed.



Do not make any other marks on the ballot.

Traducción en Español en el otro lado.

背面備有中文譯本

Commissioners
Langdon D. Neal, *Chairman*
Richard A. Cowen,
Secretary/Commissioner
Marisel A. Hernandez, *Commissioner*
Executive Director Lance Gough



69 W. Washington, Suites 600/800
Chicago, Illinois 60602
Telephone (312)269-7900
TTY (312)269-0027
(For the hearing impaired only)

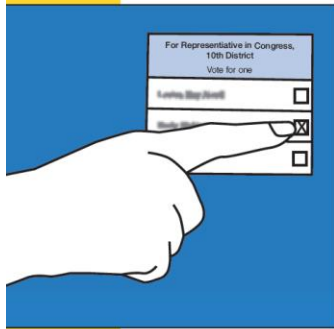
TOUCHSCREEN INSTRUCTIONS

Para Instrucciones en Español
Vea al Juez de Elección

這些指示備有中文版 -
請向選舉官員查詢



INSERT the **Voter Card** into the yellow slot at bottom right. Push all the way in until you feel it “click.” Touch the screen to select a language.

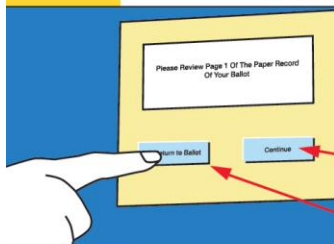


TOUCH the area that contains the name of the candidate of your choice. Look for an x mark to the right of the chosen candidate’s name. **You may change your vote by touching the same selection again to de-select.** For write-in votes, follow the instructions on the screen.

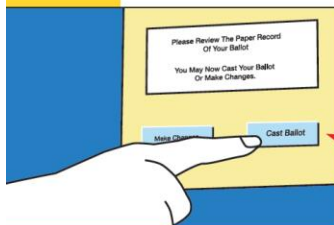
Continue to the following page by touching **Next** or return to the previous page by touching **Back**.



REVIEW & CAST BALLOT



- **TOUCH** panel to **Review** a paper record of your ballot.
- **TOUCH Continue** to scroll through entire ballot, or **Return to Ballot** for corrections.



- When your ballot is complete,
- **TOUCH Cast Ballot**, and your ballot is **Accepted**.

YOUR BALLOT IS NOW CAST!

The **Voter Card** will now eject. Please return it to an Election Judge.